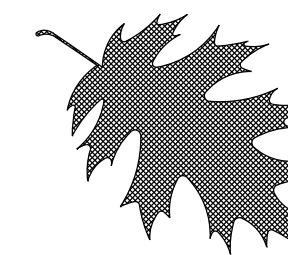
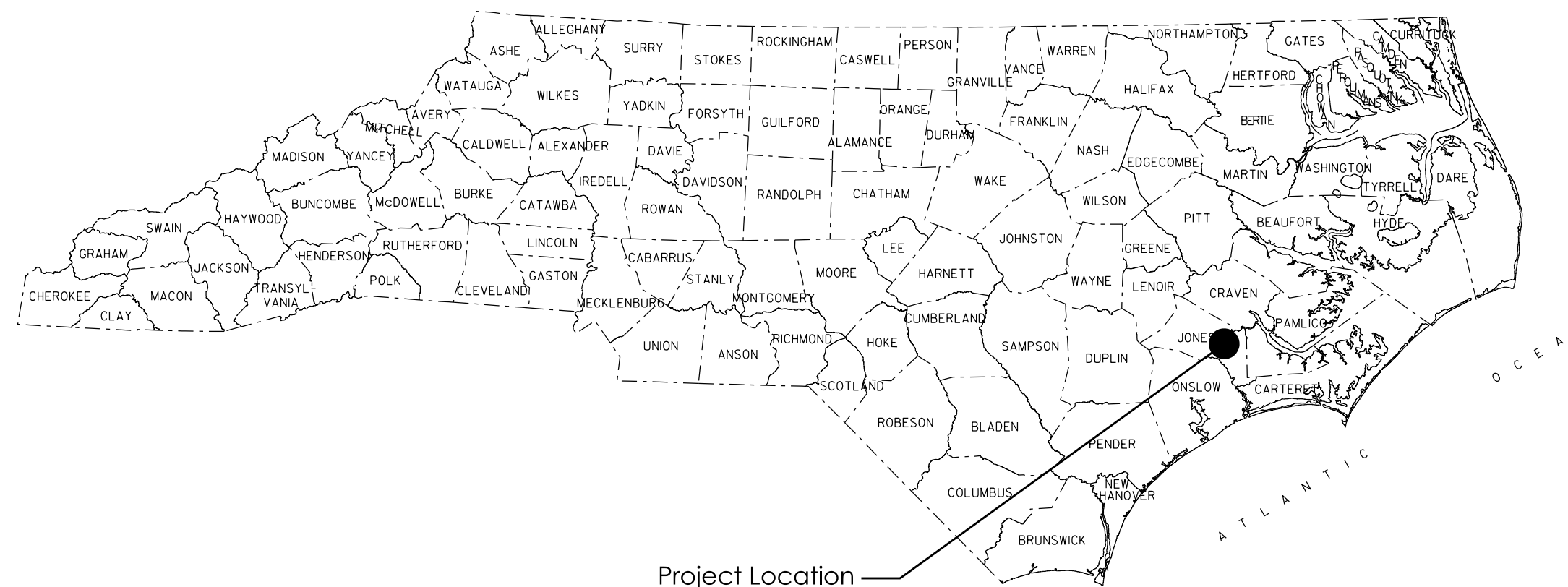
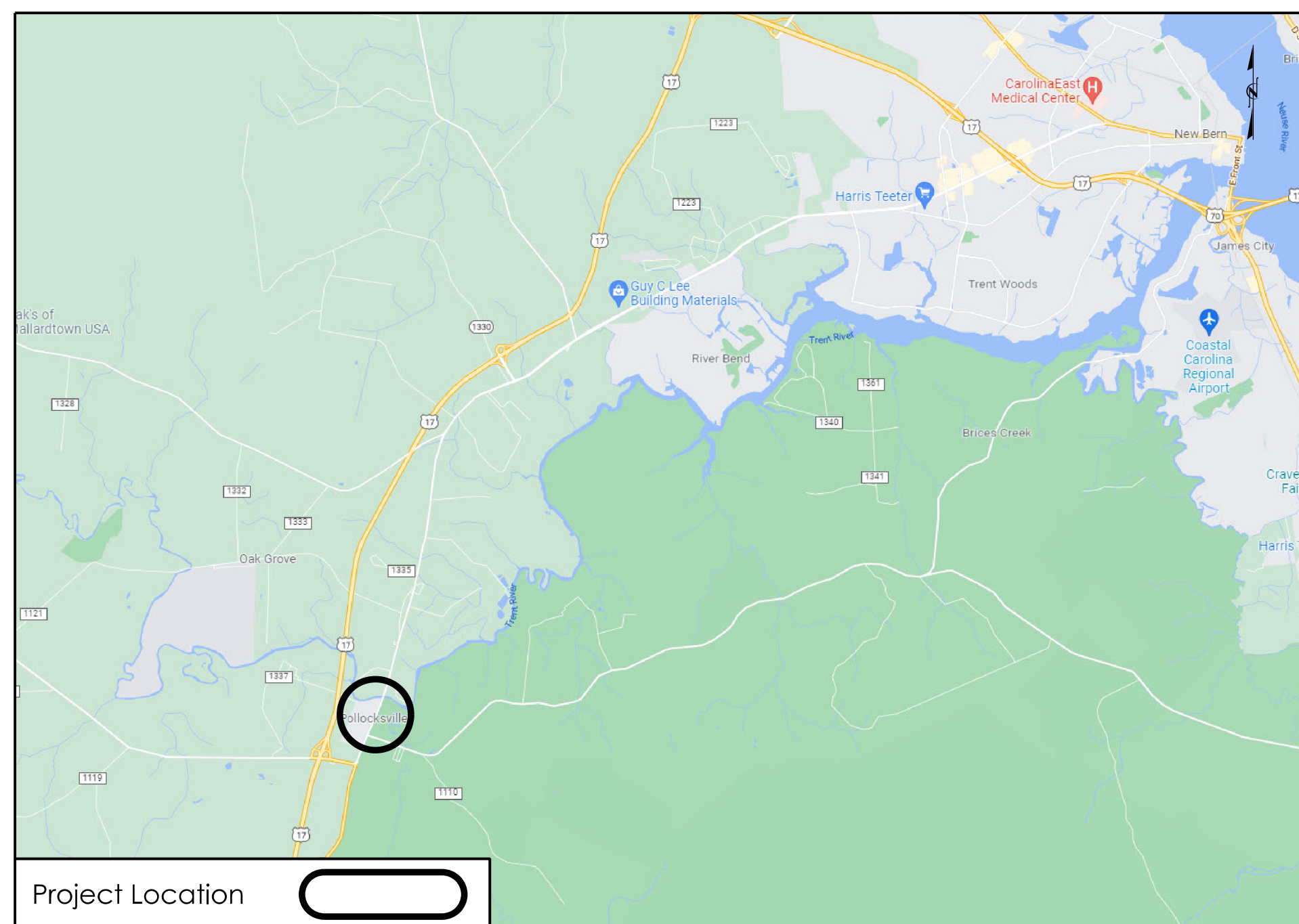


HIGHWAY LANDSCAPE DEVELOPMENT PROJECT



T.I.P. #	STATE PROJECT W.B.S. #	SHEET #	SHEET # TOTAL
-----	ER-5600	L1	5
FED. PROJ. #	DESCRIPTION		DIVISION
-----	Enhancement		2



Summary of Quantities
1 Year Establishment Period

DES	SEC	QTY	UNIT	KEY	BOTANICAL NAME	COMMON NAME	FURNISH	NOTES	A.S.N.S.
Shrubs									
L	1670	56	ea	IV	<i>Ilex vomitoria</i> 'Stoke's Dwarf'	Stoke's Dwarf Yaupon Holly	15-18"; #3 Cont.	3' O.C.	5.5
L	1670	28	ea	ND	<i>Nandina domestica</i> 'Firepower'	Firepower Heavenly Bamboo	15-18"; #3 Cont.	2.25' O.C.	5.6
L	1670	42	ea	RM	<i>Rosa</i> 'Meigalpio'	Red Drift® Groundcover Rose	12-15"; #3 Cont.	2.25' O.C.	6.3
Grasses/Groundcovers/Perennials/Bulbs									
L	1670	17	bag	CS	<i>Crocus</i> 'Snow White'	Snow White Crocus	Bulb; 25/bag	3" O.C.	12.9
L	1670	17	bag	CY	<i>Crocus</i> 'Yellow Mammoth'	Yellow Mammoth Crocus	Bulb; 25/bag	3" O.C.	12.9
L	1670	28	ea	ES	<i>Echinacea</i> x 'Balsomemy'	Sombrero® Lemon Yellow Coneflower	6-12"; #1 Cont.	As Shown	13.3
L	1670	126	ea	LM	<i>Liriope muscari</i> 'Variegata'	Variegated Lilyturf	6-12"; #1 Cont.	1' O.C.	13.5
Other Vegetation Costs									
L	1670	12	ea		Monthly Maintenance				
L	1670	17	cy		Mulch for Planting (Initial Planting)			Depth of 4"	
L	1670	8.5	cy		Mulch for Planting (End of 1 yr Establishment)*			Depth of 2"	
L	1670	150	sy		Pre emergence Herbicidal Treatment				
L	1670	150	sy		Post emergence Herbicidal Treatment				
L	1101	1	LS		Traffic Control				
L	1670	6	m/g		Water for Planting				
m/g - 1,000 gallons									
* 2" of mulch shall be applied to all of the new plant beds at the end of the establishment period at a date and time provided by the Division Roadside Environmental Engineer before the contract has ended.									

NOTES:

- Existing conditions shown on the plans are based on survey information and roadway plans. actual site conditions may vary.
- Prior to any demolition or work taking place, the contractor shall locate and verify all utility lines and structures within the construction areas (water, sewer, gas, electrical, etc.)
- The contractor shall take the necessary precautions to prevent damage of adjacent plant material, facilities, and structures to remain. The contractor shall restore disturbed areas to their original condition and to the satisfaction of the Division Roadside Environmental Engineer.
- The utilities shown on the plans are approximate locations. The contractor shall locate and protect in place all existing utilities before digging occurs and major construction begins.
- Demolition, removal, and disposal of items from the site must be completely in accordance with the law. The contractor is responsible for making a site visit to determine and verify all demolition requirements prior to bidding.
- The contractor shall verify all conditions and dimensions at the job site prior to construction, and if discrepancies are found, notify the Division Roadside Environmental Engineer for clarification.

CONVENTIONAL SYMBOLS

County Line.....	-----
City or Town Line.....	-----
Exist. Right of Way Line Marker.....	-----▲-----
Prop. Right of Way Line Marker (By Others).....	-----▲-----
Prop Right of Way Line Marker (By Contract).....	-----▲-----
Exist. Control of Access Line.....	-----○-----
Prop. Control of Access Line.....	-----○-----
Property Line.....	-----
Easement Line.....	-----
Slope Stake Line.....	-----
Exist. Fence.....	-----
Prop. Woven Wire Fence.....	-----
Prop. Chain Link Fence.....	-----
Exist. Road.....	-----
Prop. Road.....	-----
Guardrail.....	-----
Survey Line.....	-----
Denotes Line Equality.....	-----
Bridge.....	-----
Culvert.....	-----
Railroad.....	-----
Woods.....	-----
Exist. Telephone Pole.....	-----
Prop. Telephone Pole.....	-----
Tower Pole and Line.....	-----
Exist. Power Pole.....	-----
Prop. Power Pole.....	-----
Sanitary Sewer Line.....	-----
Water Line.....	-----
Gas Line.....	-----
Picnic Shelter.....	-----
Regeneration.....	-----
Reforestation.....	-----

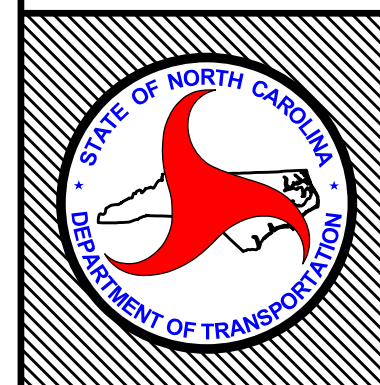
INDEX OF L SHEETS:

- L 1.0 - Title Sheet
- L 2.0 - Planting Details
- L 3.0 - L 5.0 - Planting Plans

PREPARED BY: K. Cooper DATE: 3/24/2022

REVISIONS

DATE	DESCRIPTION



STATE OF
NORTH CAROLINA
DEPARTMENT OF TRANSPORTATION

LOCATION: Main St in Pollocksville

TYPE of WORK: Enhancement

COUNTY: Jones

2014 American Standard for Nursery Stock

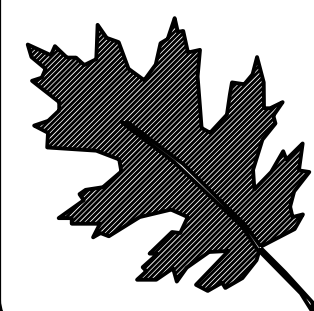
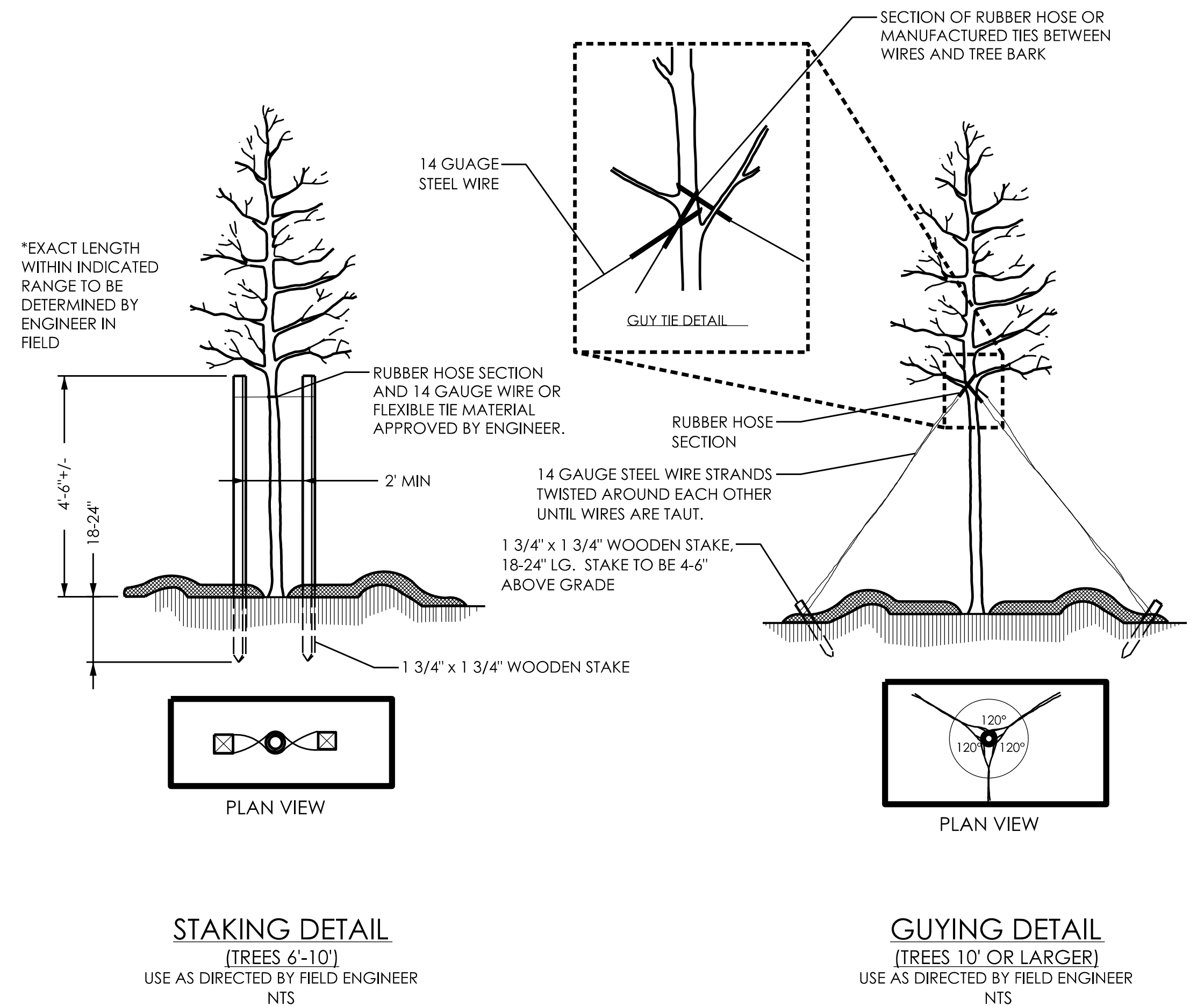
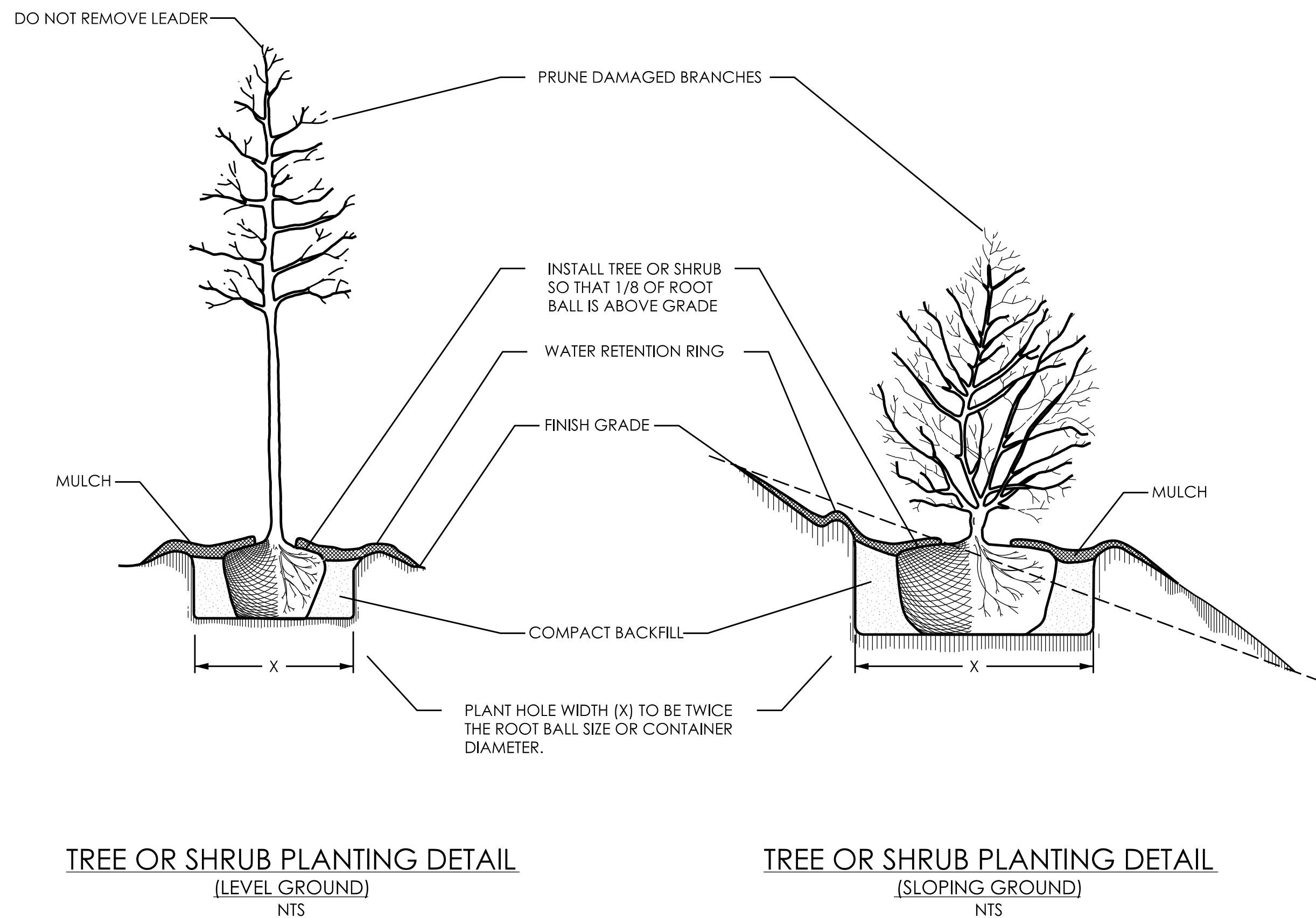
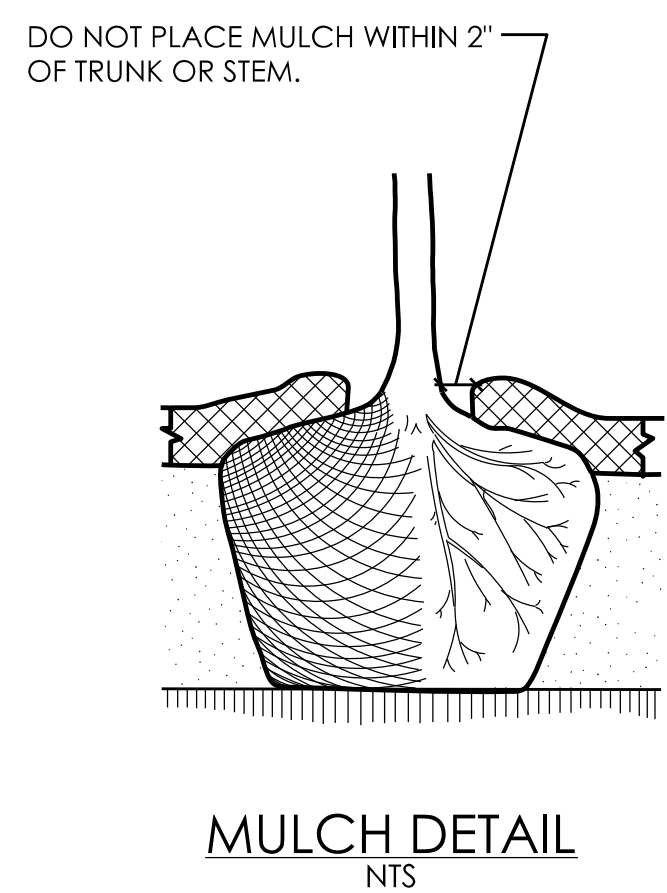
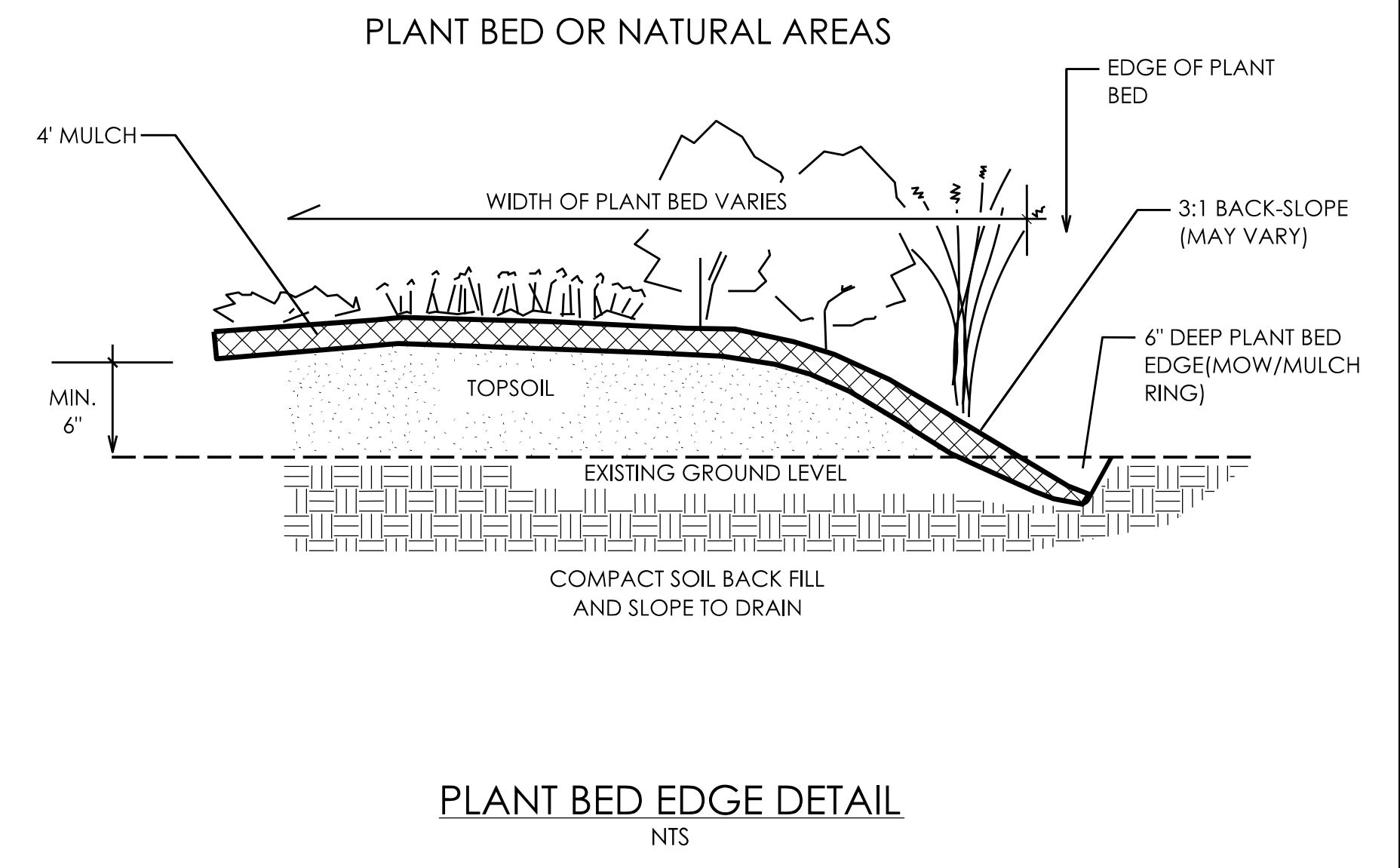
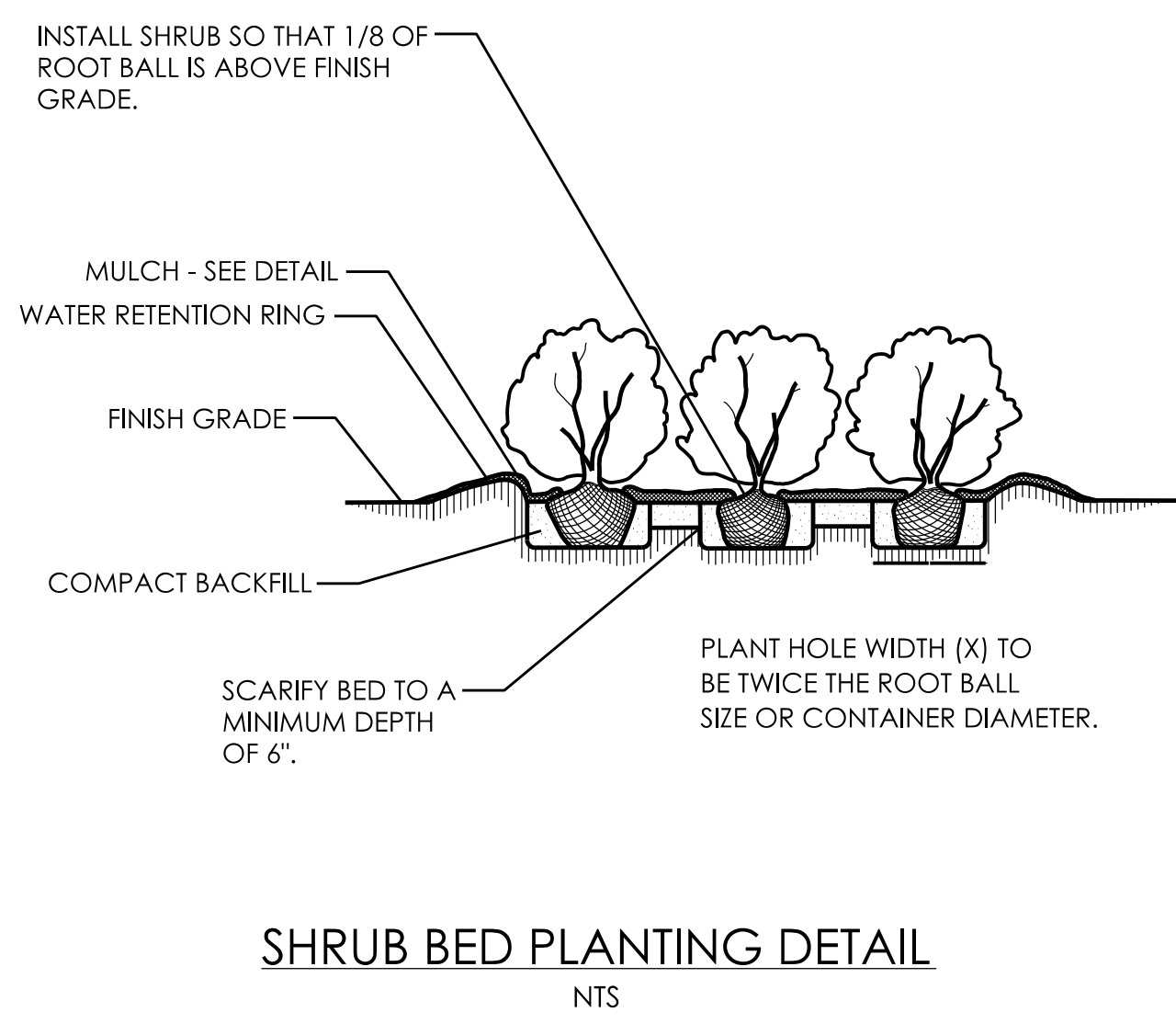
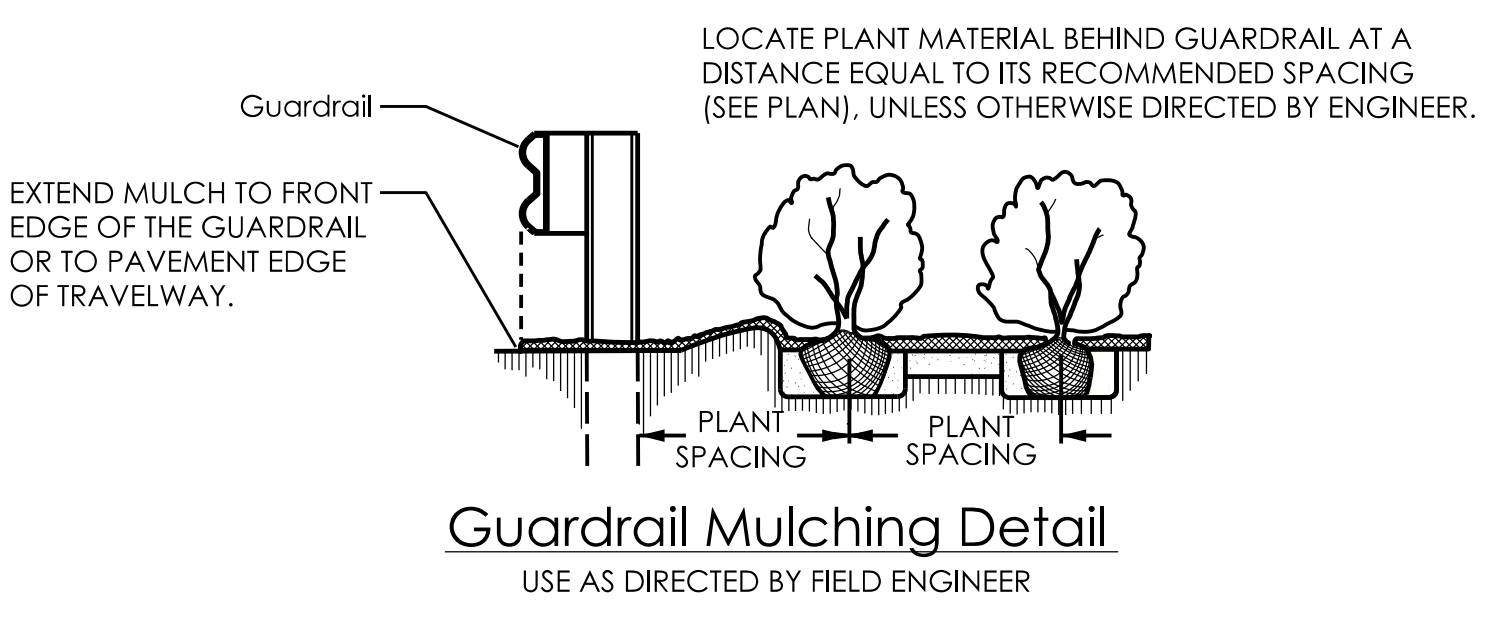
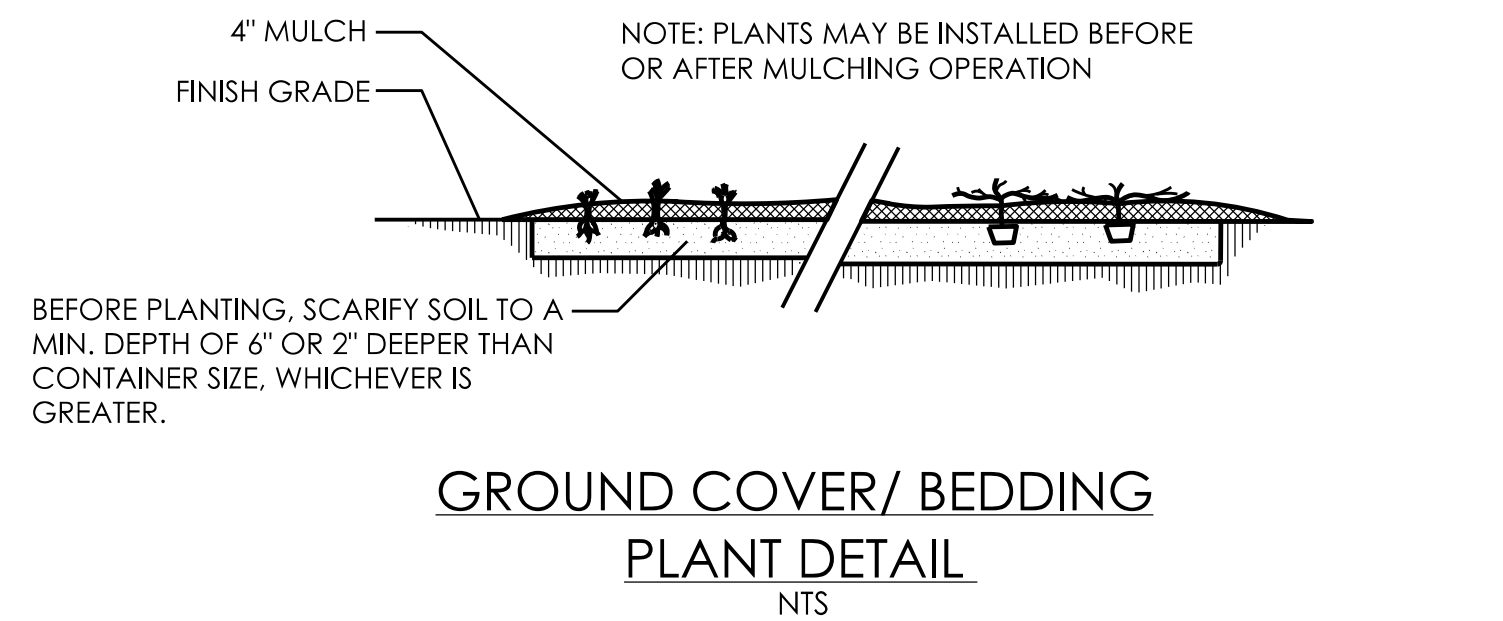
2018 NCDOT STANDARD SPECIFICATIONS

PREPARED IN THE OFFICE OF:
NCDOT- ROADSIDE ENVIRONMENTAL UNIT
AESTHETIC ENGINEERING SECTION
1557 MAIL SERVICE CENTER
RALEIGH, NC 27699 919-707-2920

Pollocksville Streetscape Landscape Enhancement

NOTES:

-  SCHEDULE FOR PLANT HOLE SIZE: PLANT HOLE WIDTH (X) TO BE TWICE THE ROOT BALL SIZE OR CONTAINER DIAMETER.
-  SEE STANDARD SPECIFICATIONS FOR PLANT BED FUMIGATION AND HERBICIDAL TREATMENT.
-  APPLY FERTILIZER AT PLANTING TIME IN THE FORM OF A SLOW RELEASE PELLET OR TABLET. APPLY AT RATE RECOMMENDED BY MANUFACTURER. BOTH RATE AND FORMULATION MUST BE APPROVED BY FIELD ENGINEER PRIOR TO APPLICATION.
-  REMOVE WIRE BASKET AND FOLD BURLAP BACK FROM TOP OF ROOT BALL BEFORE BACKFILLING IS COMPLETE.
-  ALL PRUNING TO FOLLOW STANDARD ARBORICULTURAL PRACTICES AS SPECIFIED BY INTERNATIONAL SOCIETY OF ARBORICULTURE.
-  DO NOT ATTEMPT TO STRAIGHTEN A TREE THAT HAS BEEN PLANTED AT AN ANGLE WITH THE USE OF STAKING OR GUYING. DIG TREE AND REPLANT TO UPRIGHT POSITION.

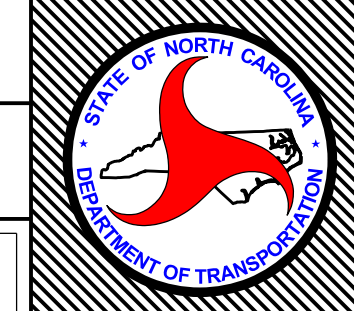


NCDOT - ROADSIDE ENVIRONMENTAL UNIT
 AESTHETIC ENGINEERING SECTION
 1557 MAIL SERVICE CENTER RALEIGH NC 27699-1557
 PH: 919-707-2935 FAX: 919-715-2554
http://www.ncdot.org/doh/operations/ap_chief_eng/roadside/

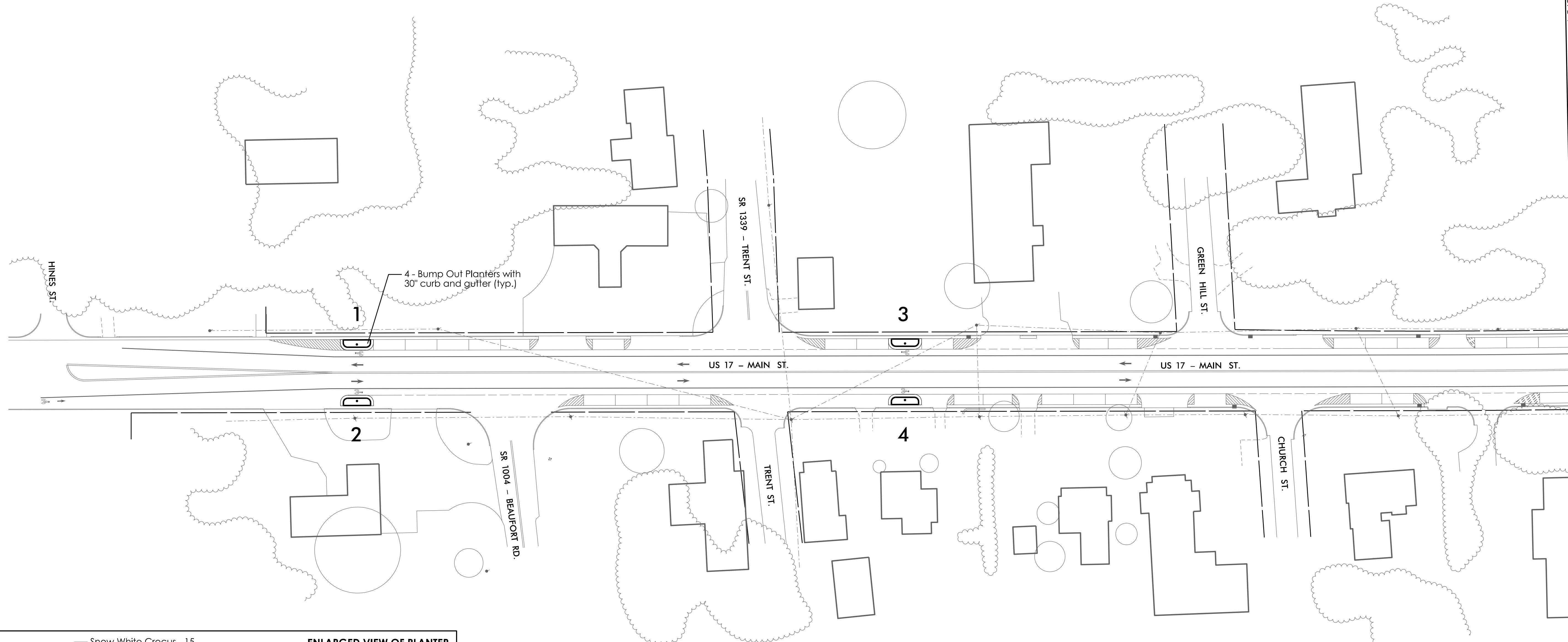
Pollocksville Streetscape Enhancement
 Jones County
 WBS #: - - - - -

SHEET DESCRIPTION:	PREL. DESIGN DATE:	1/5/2022
	CHECKED BY & DATE:	- - - - -
	FINAL DESIGN DATE:	3/24/2022

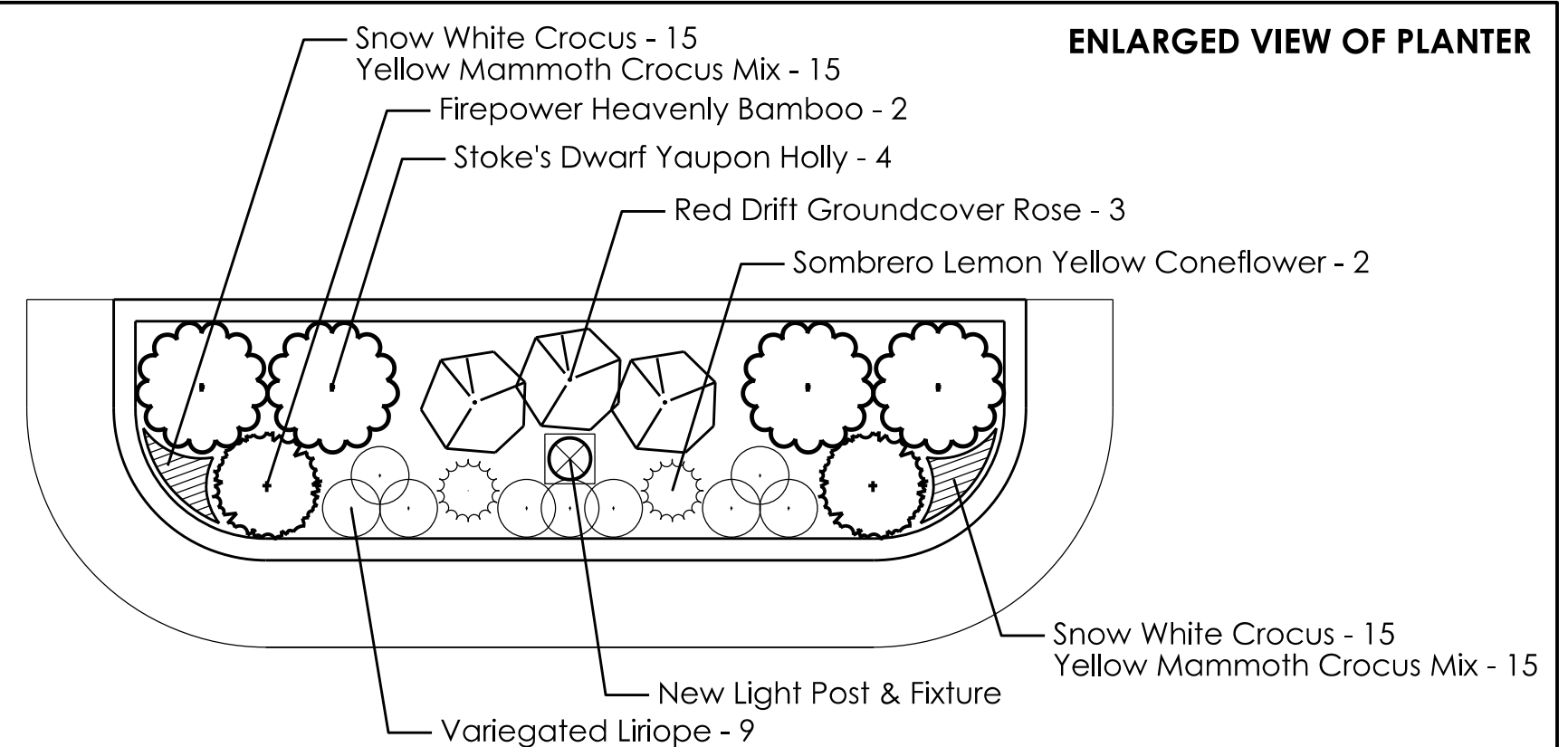
Planting Details	
Landscape Plan Sheet	
PROJECT LANDSCAPE ARCHITECT:	Kyle Cooper, PLA



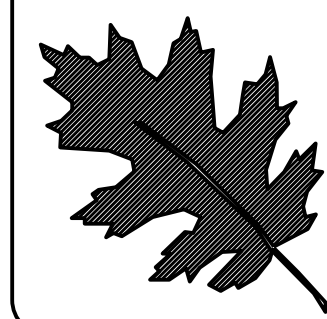
T.I.P. #	- - - - -
WBS #	- - - - -
FED I.D. #	- - - - -
SHEET NO.:	L-2
TOTAL SHEET NO.:	L-5



ENLARGED VIEW OF PLANTER

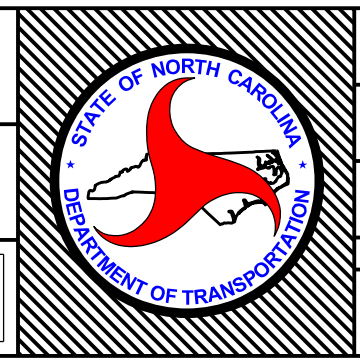


QTY	KEY	BOTANICAL NAME	COMMON NAME	NOTES
120 bulbs	CS	<i>Crocus 'Snow White'</i>	Snow White Crocus	3" O.C.
120 bulbs	CY	<i>Crocus 'Yellow Mammoth'</i>	Yellow Mammoth Crocus	3" O.C.
8	ES	<i>Echinacea x 'Balsomemy'</i>	Sombrero@ Lemon Yellow Coneflower	As Shown
16	IV	<i>Ilex vomitoria 'Stoke's Dwarf'</i>	Stoke's Dwarf Yaupon Holly	3" O.C.
36	LM	<i>Liriope muscari 'Variegata'</i>	Variegated Lilyturf	1' O.C.
8	ND	<i>Nandina domestica 'Firepower'</i>	Firepower Heavenly Bamboo	2.25' O.C.
12	RM	<i>Rosa 'Meigalpio'</i>	Red Drift@ Groundcover Rose	2.25' O.C.



NCDOT - ROADSIDE ENVIRONMENTAL UNIT
 AESTHETIC ENGINEERING SECTION
 1557 MAIL SERVICE CENTER RALEIGH NC 27699-1557
 PH: 919-707-2935 FAX: 919-715-2554
http://www.ncdot.org/doh/operations/dp_chief_eng/roadside/

Pollocksville Streetscape Enhancement
 Jones County
 WBS #: - - - - -

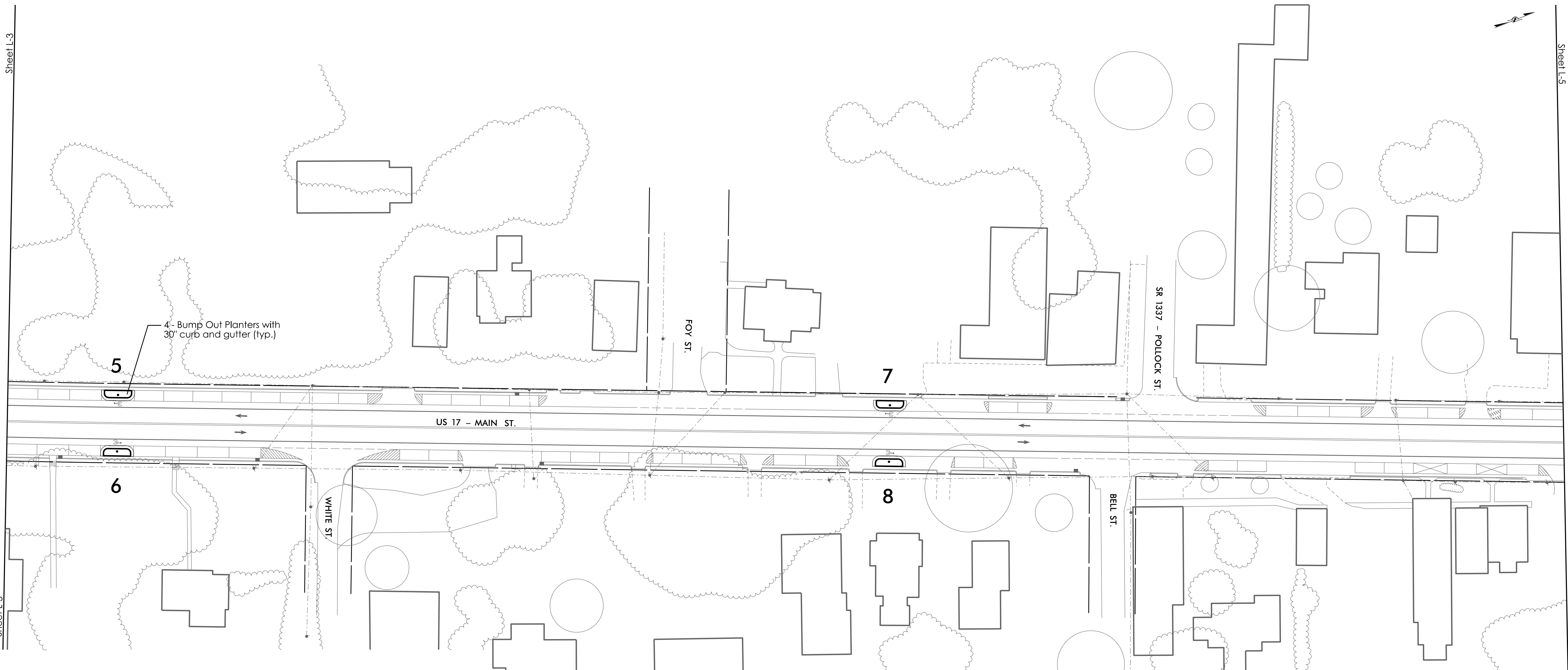
SHEET DESCRIPTION:	PREL. DESIGN DATE: 1/5/2022	Planting Plan		T.I.P. # - - - - -
	CHECKED BY & DATE: - - - - -	Landscape Plan Sheet		WBS # - - - - -
	FINAL DESIGN DATE: 3/24/2022	PROJECT LANDSCAPE ARCHITECT: Kyle Cooper, PLA		FED I.D. # - - - - -
			SHEET NO.: L-3	TOTAL SHEET NO.: L-5

Sheet L-3

Sheet L-3

Sheet L-5

Sheet L-5



4 - Bump Out Planters with 30" curb and gutter (typ.)

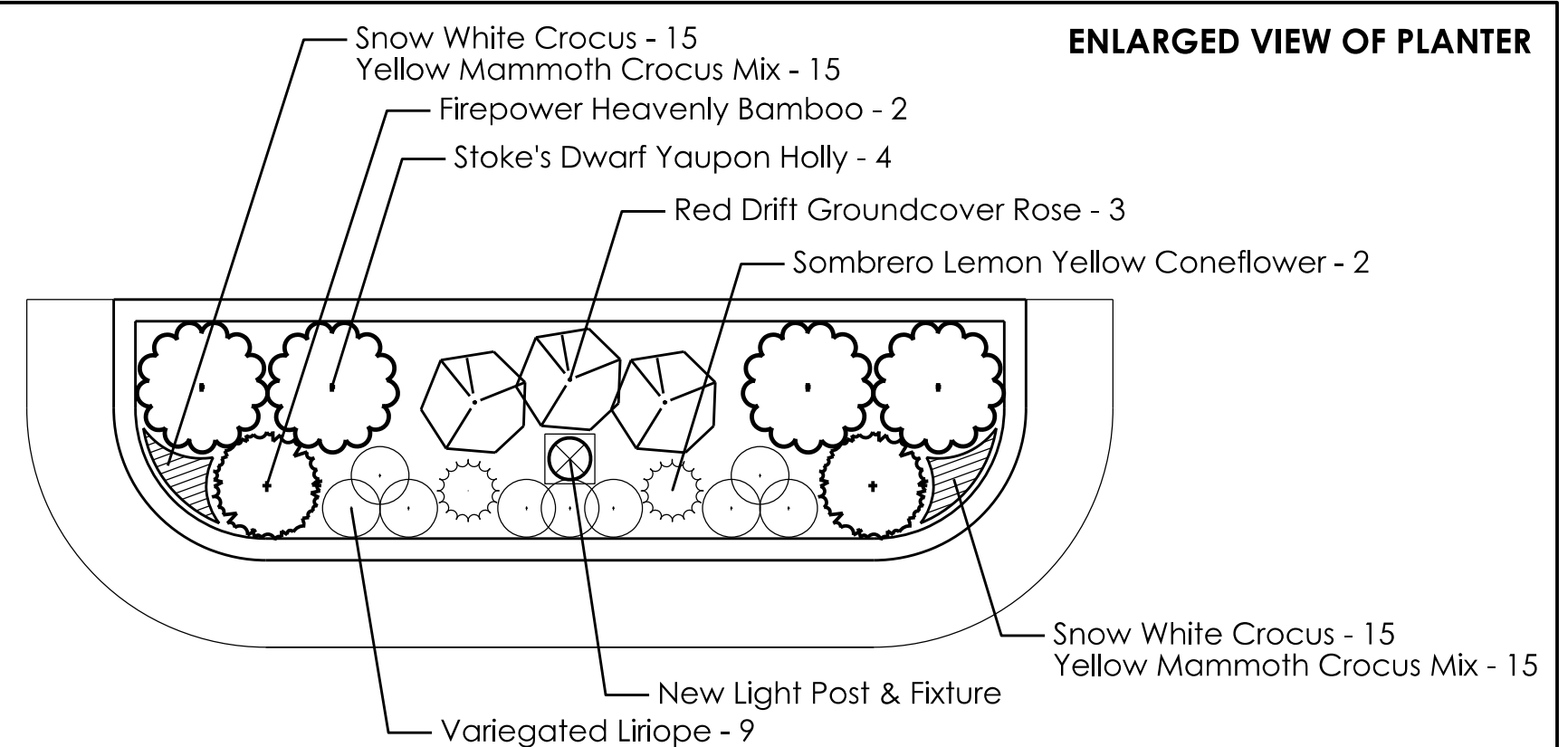
5

6

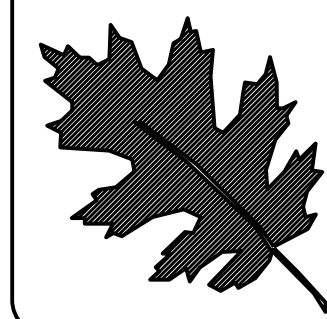
7

8

ENLARGED VIEW OF PLANTER



QTY	KEY	BOTANICAL NAME	COMMON NAME	NOTES
120 bulbs	CS	<i>Crocus 'Snow White'</i>	Snow White Crocus	3" O.C.
120 bulbs	CY	<i>Crocus 'Yellow Mammoth'</i>	Yellow Mammoth Crocus	3" O.C.
8	ES	<i>Echinacea x 'Balsomemy'</i>	Sombrero@ Lemon Yellow Coneflower	As Shown
16	IV	<i>Ilex vomitoria 'Stoke's Dwarf'</i>	Stoke's Dwarf Yaupon Holly	3" O.C.
36	LM	<i>Liriope muscari 'Variegata'</i>	Variegated Lilyturf	1' O.C.
8	ND	<i>Nandina domestica 'Firepower'</i>	Firepower Heavenly Bamboo	2.25' O.C.
12	RM	<i>Rosa 'Meigalpio'</i>	Red Drift@ Groundcover Rose	2.25' O.C.



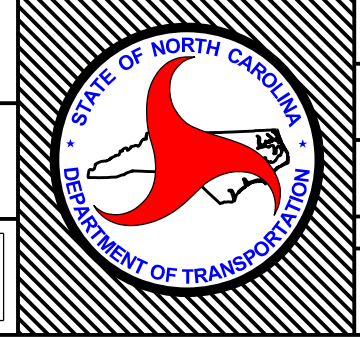
NCDOT - ROADSIDE ENVIRONMENTAL UNIT
 AESTHETIC ENGINEERING SECTION
 1557 MAIL SERVICE CENTER RALEIGH NC 27699-1557
 PH: 919-707-2935 FAX: 919-715-2554
http://www.ncdot.org/doh/operations/ap_chief_eng/roadside/

**Pollockville Streetscape Enhancement
 Jones County**

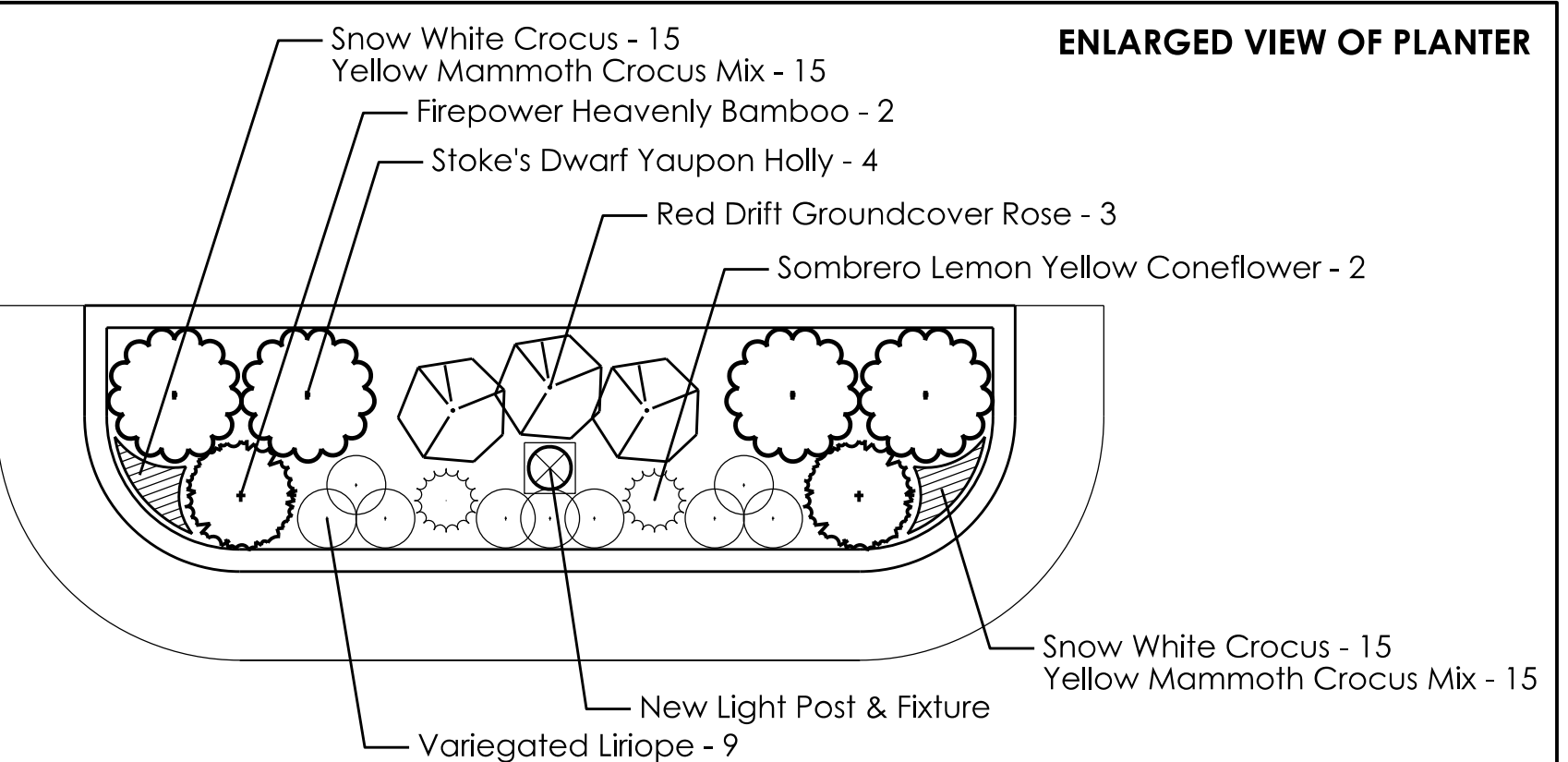
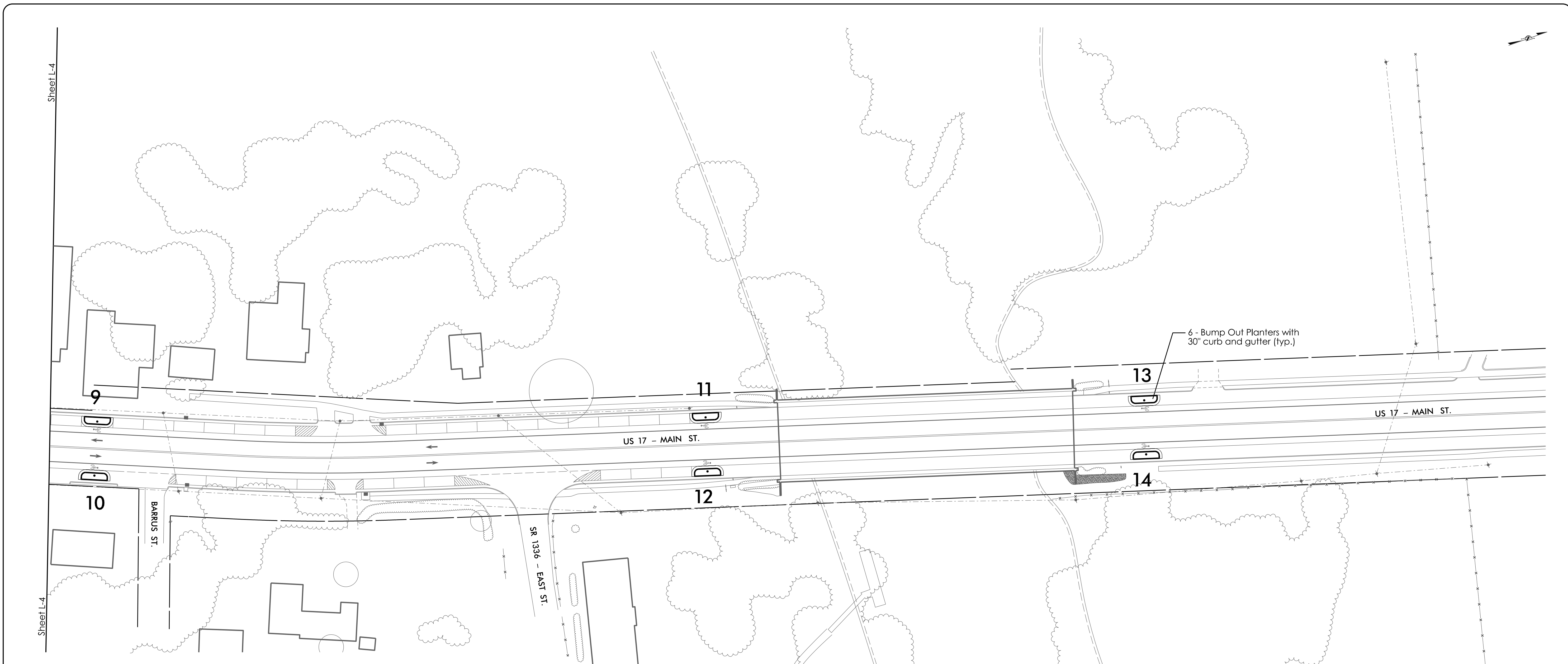
WBS #: - - - - -

SHEET DESCRIPTION:	PREL. DESIGN DATE:	1/5/2022
	CHECKED BY & DATE:	- - - - -
	FINAL DESIGN DATE:	3/24/2022

Planting Plan
Landscape Plan Sheet
PROJECT LANDSCAPE ARCHITECT: Kyle Cooper, PLA



T.I.P. #	- - - - -
WBS #	- - - - -
FED I.D. #	- - - - -
SHEET NO.:	L-4
TOTAL SHEET NO.:	L-5



QTY	KEY	BOTANICAL NAME	COMMON NAME	NOTES
180 bulbs	CS	<i>Crocus 'Snow White'</i>	Snow White Crocus	3" O.C.
180 bulbs	CY	<i>Crocus 'Yellow Mammoth'</i>	Yellow Mammoth Crocus	3" O.C.
12	ES	<i>Echinacea x 'Balsomey'</i>	Sombrero@ Lemon Yellow Coneflower	As Shown
24	IV	<i>Ilex vomitoria 'Stoke's Dwarf'</i>	Stoke's Dwarf Yaupon Holly	3" O.C.
54	LM	<i>Liriope muscari 'Variegata'</i>	Variegated Lilyturf	1' O.C.
12	ND	<i>Nandina domestica 'Firepower'</i>	Firepower Heavenly Bamboo	2.25' O.C.
18	RM	<i>Rosa 'Meigalpio'</i>	Red Drift@ Groundcover Rose	2.25' O.C.

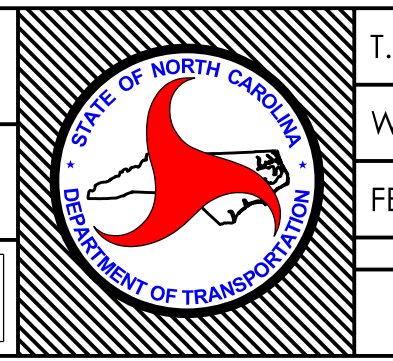



 NCDOT - ROADSIDE ENVIRONMENTAL UNIT
 AESTHETIC ENGINEERING SECTION
 1557 MAIL SERVICE CENTER RALEIGH NC 27699-1557
 PH: 919-707-2935 FAX: 919-715-2554
http://www.ncdot.org/doh/operations/ap_chief_eng/roadside/

Pollocksville Streetscape Enhancement
Jones County
 WBS #: - - - - -

PREL. DESIGN DATE: 1/5/2022
 CHECKED BY & DATE: - - - - -
 FINAL DESIGN DATE: 3/24/2022

Planting Plan
 Landscape Plan Sheet
 PROJECT LANDSCAPE ARCHITECT: Kyle Cooper, PLA



T.I.P. # - - - - -
 WBS # - - - - -
 FED I.D. # - - - - -
 SHEET NO.: L-5
 TOTAL SHEET NO.: L-5